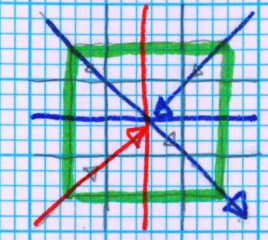
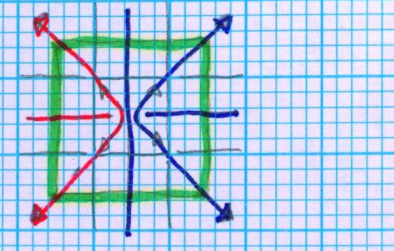
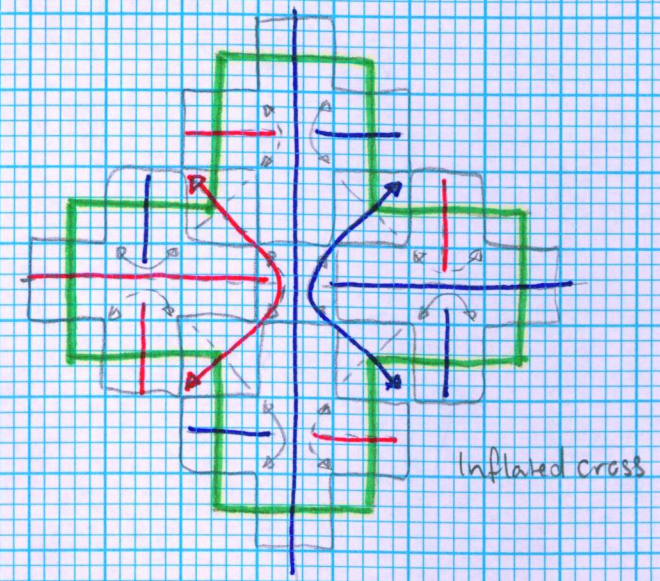
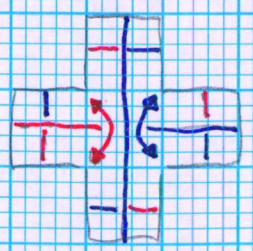
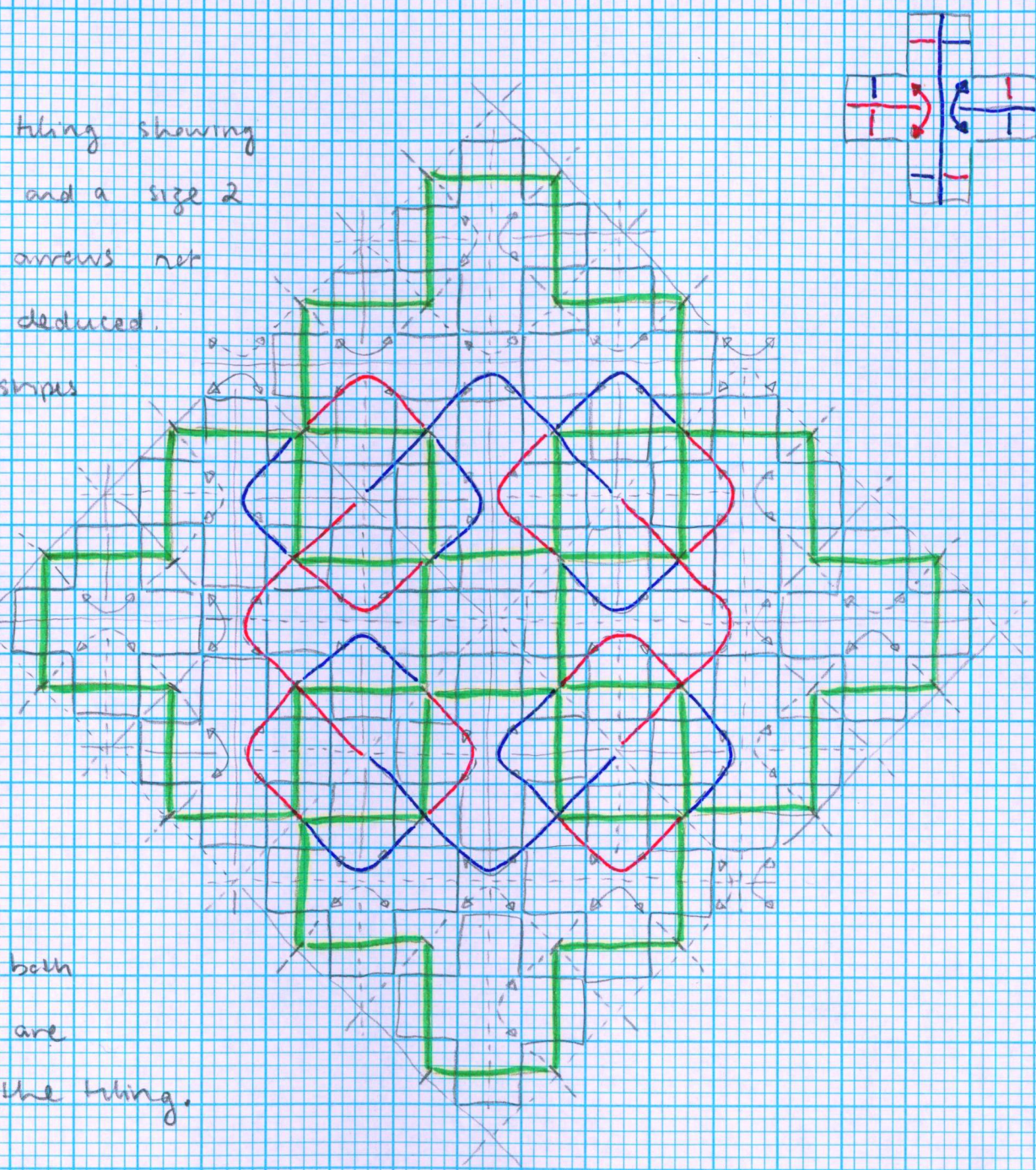


A section of tiling showing inflated tiles and a size 2 ring. Those arrows not shown can be deduced.

Likewise the stripes near the ends of the arms of the crosses are not shown, but should be recalled.

Note also that both A and B tiles are necessary to the tiling.

Decomposition of the tiles into similar tiles with the same matching rules ensures the ability to tile the plane with these tiles.



Inflated A tile. B tile has arm colours swapped.

4 crosses head in around a C tile combine to an inflated cross tile. These central C tiles are on the double grid already established. The inflated cross has the same matching rules as the original cross. The size 2 rings may be ignored and the same matching rules of the inflated tiles ensure the creation of size 2 rings.

At left is a central B tile inflated with two pairs of inflated cross tiles, heads together at upper left and lower right, producing the requisite size 2 ring.

The reproduction of matching rules at each inflation ensures ever larger rings produced so any tiling is non-periodic.